

INTERLUBE

Leaders in Lubrication Solutions



PNEUMATIC PISTON PUMP Centralised Lubrication Systems
Multi-Industry Applications



Interlube Systems Ltd - maximising industrial performance world-wide...

PISTON PUMP

The types of piston pump covered in this brochure are purpose designed for pneumatic applications. They are suitable for use with oil or fluid grease and have a delivery of 10cm³ per stroke.

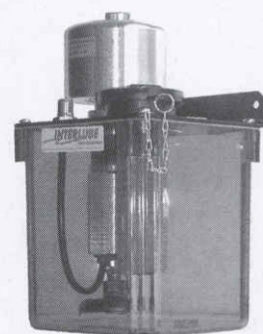
Both types can be supplied either as a bare pump or complete with a cast aluminium or a clear CAB reservoir of 1.5, 2 or 4.5 litres capacity. An extensive range of Positive Displacement Units (PDU's) is also available for use with these pumps.

NB. All PDU's in the system must be discharged by one stroke of the pump. Total stroke volume of PDU's must not exceed 70% of pump discharge.



CAST ALUMINIUM

CLEAR CAB



TECHNICAL SPECIFICATIONS

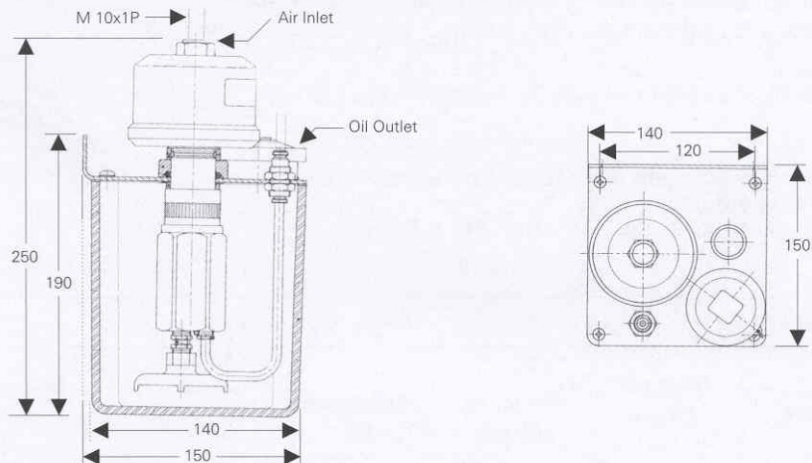
Discharge Volume:	10 cm ³ /stroke
Maximum Pressure:	100 bar
Residual Relief Pressure:	1 bar
Air Supply Pressure:	4 - 10 bar
Ratio Air/Oil:	1 : 9
Air Cylinder Volume:	110cm ³ / strokes
Operating Temperatures:	- 25°C to + 80°C
Recommended Lubricants:	Oil 10 - 1500 cSt Fluid Grease - NLGI 00/000
Reservoir Sizes:	1.5 ltr & 4.5 ltr (both cast aluminium) and 2 ltr (clear ABS)

ORDERING METHOD

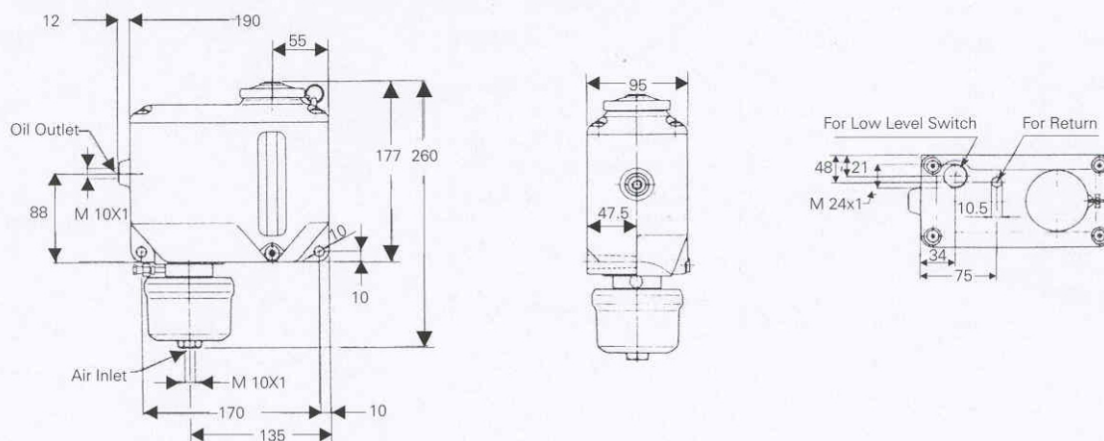
Model	Lubricant	Weight	Reservoir Capacity (Mat: aluminium)	Part No.
Pump 10P-E1,5	Oil	3.7kg	1.5 ltr	14111-303
Pump 10P-E4,5	Oil	4.5kg	4.5 ltr	14111-403
Pump 10P-E1,5	Fluid Grease	3.7kg	1.5 ltr	14111-353
Pump 10P-E4,5	Fluid Grease	4.5kg	4.5 ltr	14111-453
Pump 10P	Oil	1.1kg	Pump Only	14111-002
Pump 10P-E2	Oil	2.3kg	2 ltr	14111-251
Pump 10P-E2	Fluid Grease	2.3kg	2 ltr	14111-211

PNEUMATIC PISTON PUMP

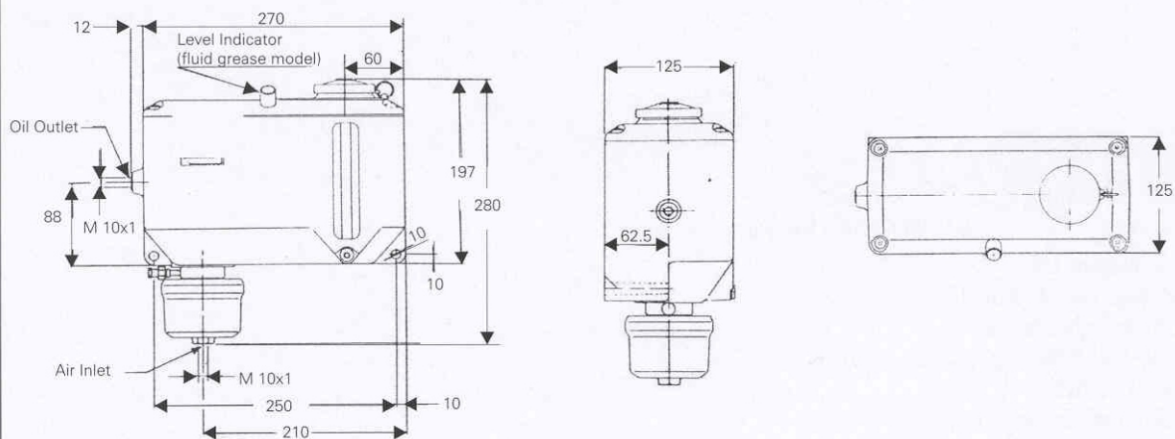
DIMENSIONS - 2 litre model, clear CAB Reservoir



DIMENSIONS - 1.5 litre, cast aluminium reservoir



DIMENSIONS - 4.5 litre, cast aluminium reservoir



All dimensions are in mm

DYNAMIC POSITIVE DISPLACEMENT UNIT

Designed for small to medium size machines, this unit features a dynamic displacement method for lubricant distribution. At each cycle, the pump provides a high pressure pulse to the valves which deliver a precise volume of lubricant to the application points.

The system is cyclic total loss and will handle a wide range of lubricants.

Recommended lubricant: Oil 20-1800 cSt / NLGI Grade 000 fluid grease

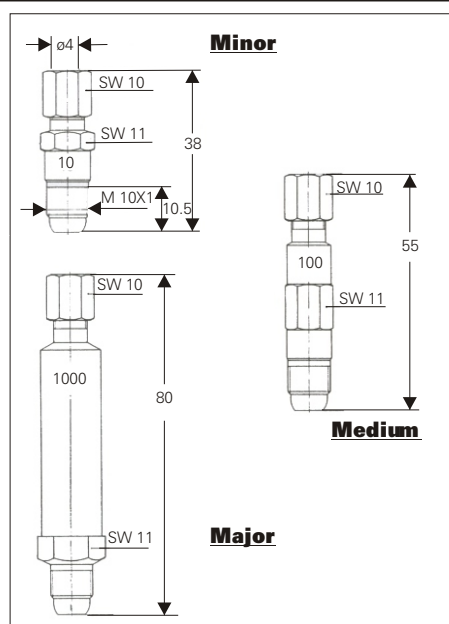
Operating Pressure: 15-100 Bar

Discharge range: .005 .010 .025 .05 .10 .25 .50 1.00 cc



ORDERING METHOD

Designation	Range	Dose per Stroke (cc)	Weight kg 100 pcs	Reference No.
Meter valve 5	Minor	0.005cc	2.3	2.80 90-05.2
Meter valve 10	Minor	0.010cc	2.3	2.80 90-10.2
Meter valve 20	Minor	0.025cc	2.3	2.80 90-25.2
Meter valve 50	Minor	0.05cc	2.3	2.80 90-50.2
Meter valve 100	Medium	0.10cc	2.5	2.80 91-10.2
Meter valve 250	Medium	0.25cc	2.5	2.80 91-25.2
Meter valve 500	Major	0.5cc	6.0	2.80 91-50.2
Meter valve 1000	Major	1cc	6.0	2.80 92-10.2



Interlube Systems Ltd

St Modwen Road, Parkway Industrial Estate

Plymouth, Devon, England PL6 8LH

Tel: +44 (0)1752 676000

Fax: +44 (0)1752 676001

e-mail: info@interlubesystems.com

Web Site: www.interlubesystems.com



www.interlubesystems.com
HELP DESK · PRODUCT RANGE · LITERATURE REQUEST

For advice on which product is most suitable for your needs - visit our web site from where you can e-mail us your requirements. Our Help Desk will respond within 24hrs by return e-mail or phone.

